

**EASTERN INDIA BIGGEST LED WALL DISTRIBUTOR**

# Wise Solutions

Display that bring business



[www.wisesolutions.co.in](http://www.wisesolutions.co.in)

AB-33/34, Prafulla Kanan, Near SBI ATM, Kestopur, Kolkata - 700 101

## ABOUT WISE SOLUTIONS

Wise Solutions, is one of the Biggest LED wall Distributor in Eastern India. We have been dedicating to the aim that making high quality products, and have been well integrated with production, project, capital & marketing. As a professional and market oriented LED Display manufacture.

Wise Solutions not only keeps improving on normal LED Display Screen, enhances the product's cost effective and overall market competitiveness, but also makes breakthrough progresses on special usages. Our product, with high quality and competitive price, spread all over India and earn excellent public reputation from both domestic and overseas market.

Wise Solutions Provides a full series of LED Display Products involving various Touch Screen Digital Floor Standee, Advertising LED Display Screen, Rental Display for various kind of location and events throughout India. Apart from this we also provide Promotional Van Rental and Digital Signage Standee Rental Service.



**8+**  
Golden years  
of service



# OUR CLIENTS



## DIGITAL BILLBOARD

Digital Billboard are great advantages over traditional flex based billboard. Time To market is pretty low, you can onboard your new customer for showing advertisements in just few min. Here are few hidden features of digital billboard.

- Remote content Management
- Time To Market is less
- Less Human resource required
- Less Cost , as no printing, no installation

## OUTDOOR LED DISPLAY

Wise Solutions is leading manufacturers and optimum supplier of different types of led video wall , which can be used to display different types of data in static as well as dynamic mode.

we sucessfully supplied to different types of private as well as govt orgnisatation.

led video wall is used to display different images and video for advertisement as well as different types of information display



## INDOOR LED DISPLAY

The lineup of indoor LED tiles provides unmatched choice, versatility, and flexibility when it comes to specifying high-performance video walls.

Our professional-grade LED video walls are perfect for indoor applications like control rooms, hospitality, retail, entertainment, or corporate. Choose from award-winning premium options for critical viewing or budget-friendly high-performance options to engage and entertain customers with spectacular viewing experiences.

### STRAIGHT DISPLAY



### CURVE DISPLAY



## DISPLAY BOARD (AQMS)

Environment Connect is growing rapidly as more customers and pollution control boards adopt the solution and add more devices. Pollution regulators are releasing additional requirements and more features, analytics, reporting is being asked for. AIPL is happy to support these new requirements and additions by adding these features and facilities.

Environment Connect is already in use as aggregator solution and AIPL is adding capability to get data from other analyzers like solar radiation, radiation from other sources, etc.

In addition to standard pollution measurement and monitoring hardware and analyzers, other hardware like flow meters, temp sensors are also required to be installed and data from these devices is also critical. In some cases hardware like video monitors with movement/ flow sensors will also need to be integrated as part of the site.

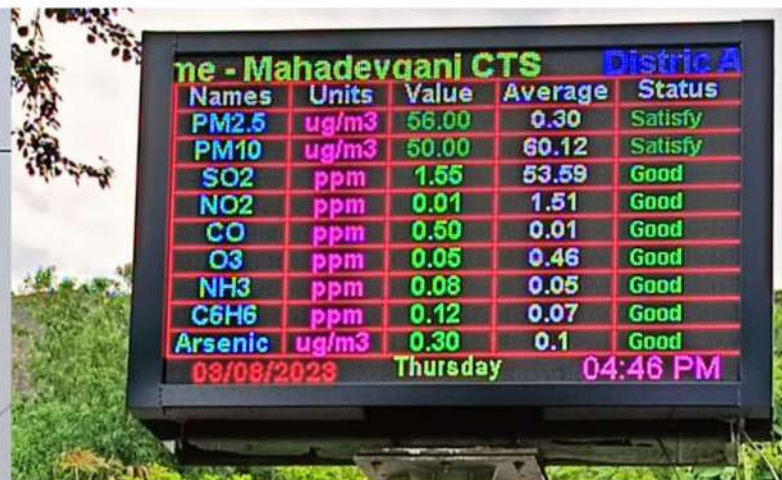
Environment Connect allows users to configure such hardware in an installation and acquire data from such hardware seamlessly. Such data is then tagged as appropriate and processed. In many cases and especially when exact pollution levels are required to be derived from certain calculations and normalizations, availability of such data becomes very useful.

In addition to such hardware, Environment Connect allows users to acquire data from related instrumentations like automatic weather stations and tag the same to pollution data. Data coming from both these devices can be used to generate very useful insights like Pollution Rose and spread of pollution cloud over time lines.



Station Name - Sakarigall				
Names	Units	Value	Average	Status
PM2.5	ug/m3	59	41.8	Good
PM10	ug/m3	22	34.8	Good
SO2	ppm	15	16.28	Good
NO2	ppm	1.5	1.68	Good
CO	ppm	0.16	0.15	Good
O3	ppm	0.03	0.08	Good
NH3	ppm	0.12	0.1	Good
C6H6	ppm	0.05	0.12	Good
Arsenic	ug/m3	0.04	0.14	Good

21/08/2023 Monday 05:47 PM



Station Name - Mahadevganj CTS				
Names	Units	Value	Average	Status
PM2.5	ug/m3	56.00	60.12	Satisfy
PM10	ug/m3	50.00	60.12	Satisfy
SO2	ppm	1.55	53.59	Good
NO2	ppm	0.01	1.51	Good
CO	ppm	0.50	0.01	Good
O3	ppm	0.05	0.46	Good
NH3	ppm	0.08	0.05	Good
C6H6	ppm	0.12	0.07	Good
Arsenic	ug/m3	0.30	0.1	Good

08/08/2023 Thursday 04:46 PM

## LED VAN

Offering you a complete choice of products which include led truck manufacturer, led video van for advertisement, led e- rickshaw on rent for election campaigns led video van and led trucks - led screen mounted trucks manufacturer.



## DIGITAL SIGNAGE

your brand. Signage reflects your brand and impacts a lot in customer mind. So great brand definitely need a signage to create an image. Wise solutions design in house signage as per customer needs.

- Signage For Corporate
- Signage for Airports
- Signage for Bus Stands (Outdoor)
- Signage for Railway station

All comes with a remote software to update video, images, slides, weather information to any of your signage with just one click seating at your office



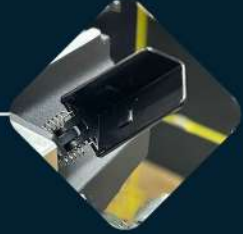
[www.wisesolutions.co.in](http://www.wisesolutions.co.in)

AB-33/34, Prafulla Kanan, Near SBI ATM, Kestopur, Kolkata - 700 101



# OUR RENTAL SERIES

METAL CORNER PROTECTION



BOTTOM PROTECTION



HIGH REFRESH RATE-3840

GOOD LOOKING DESIGN



4 LOCK CABINET



BRANDED CONNECTOR (SEETRONIC)



SPECIAL WHEEL FLIGHT CASE



[www.wisesolutions.co.in](http://www.wisesolutions.co.in)

AB-33/34, Prafulla Kanan, Near SBI ATM, Kestopur, Kolkata - 700 101

# PRODUCTS OF HUIDU



C-16C



A-3L



A-4L



A-5L



A-6L



A-7



VP-210



VP-410



VP-630



VP-830



VP-1240



VP-1620

## GET IN TOUCH

 AB-33/34, Prafulla Kanan, Near SBI ATM,  
Kestopur, Kolkata - 700 101

 +91 82406 11759 / 83369 43608

 info@wisesolutions.co.in  
enquiry@wisesolutions.co.in

 www.wisesolutions.co.in  
www.bharatled.com



[www.wisesolutions.co.in](http://www.wisesolutions.co.in)

AB-33/34, Prafulla Kanan, Near SBI ATM, Kestopur, Kolkata - 700 101

# ACCESSORIES

## SIGNAL CABLE



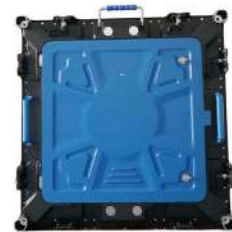
## POWER CABLE



## MS CABINET



## ALUMINIUM CABINET



## VIDEO PROCESSOR

